



## Innovative Flow-Liner® Technology “Flows” Under The West Wing

A Flow-Liner® Certified Installer recently completed a project some would say “of Presidential Proportions”. Flow-Liner CIP Conduit® was utilized in renovating the utilities under the nations (the world’s) most powerful office, the Office of The President of The United States.

### Problem at The West Wing:

Flow-Liner® was recommended for The White House project by one of the largest government contractors in the US. The Flow-Liner® Installer had worked with the General Contractor just recently at a US Naval base re-lining underground conduits. This GC had the White House utilities contractor, which was renovating the utilities located in and under The West Wing of The White House, contact the Flow-Liner® Installer. The utility contractor was looking for a non-invasive way to repair a 4 inch inside diameter deteriorating telecommunication conduit located in the basement and under the first floor of The West Wing. The existing conduit was allowing underground water to infiltrate into the conduit, which could cause damage to the new



telecom cables that were scheduled to be installed. The contractor contacted the Certified Installer and asked to schedule the Flow-Liner CIP Conduit® installation as soon as possible. In order to schedule the project, the Secret Service had to perform a very detailed background check on the Installer’s company and the lining crew.

The Installer also encountered scheduling problems due to hurricane Sandy, since it affected the Washington, D.C. area and the North Eastern coastline. The conduit lining Project Manager actually crossed paths with the Director of FEMA while working in The West Wing.

## Issues at Hand:

When the lining crew arrived at The White House they attended a security briefing and the truck and equipment had to be thoroughly inspected. The White House Security does not allow display of company logos while on White House property so the advertising on the truck and trailer was covered up. Also, the lining crew was not allowed to take pictures inside or outside The White House. A separate digital security camera was provided by Secret Service to the lining crews Project Manager for pictures of the installation only. The Project Manager was instructed to give the camera back to the Secret Service Agent when the project was finished. The pictures had to be reviewed by the Secret Service prior to being released as unclassified.



**The President's Oval Office**



**Certified Flow-Liner® Installer preparing the conduit lining inversion unit**

After a tour and review of the telecommunications conduit location, it was clear why the contractor did not want to replace the conduit. Replacing the conduit would require excavation and demolition of thick steel reinforced concrete floors and walls both in the basement and on the first floor. The first floor contains the President's Oval Office as well as other Executive Staff Offices, so replacement was not an option.

Before the lining crew could install the CIP Conduit® liner, they had to televise and inspect the inside of the conduit with a special video camera which is designed for this purpose. After inspecting the conduit with the video camera, the crew found the conduit ran approximately 45-50 feet under the first floor of The West Wing. It also had several bends in it traveling in different directions, but this was not a problem for the crew. They were on a mission and knew what had to be accomplished.



**White House grounds showing the main building along with the East and West Wing additions**

## Solution and Result:

The Flow-Liner CIP Conduit® was installed in less than one day. The walls and floors of the historical White House West Wing structure were unscathed. The telecommunications conduit lining saved the utility contractor a tremendous amount of labor and demolition. The Flow-Liner product also eliminated any inconveniences the demolition noise, dust and debris would have caused the President and his Staff.



Flow-Liner® installation with the inversion unit set-up



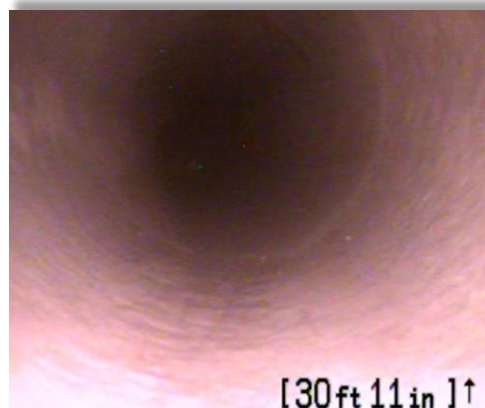
Picture of the Flow-Liner CIP Conduit® (on left) after it was inverted into the telecommunication conduit

The Flow-Liner® Installer made the following comment:

***“This project will be remembered now and in the future as the most pinnacle experience in our company’s history. We are proud to say Flow-Liner® is helping to protect some of the most important communications in the world.”***



Picture of before the Flow-Liner® installation, showing water infiltrating into the bottom of the existing conduit



Picture of after Flow-Liner® was installed, sealing the joints and eliminating the water problem

Visit us at [www.flow-liner.com](http://www.flow-liner.com)  
Toll free in the USA 1-800-348-0020  
International +1-740-453-9387