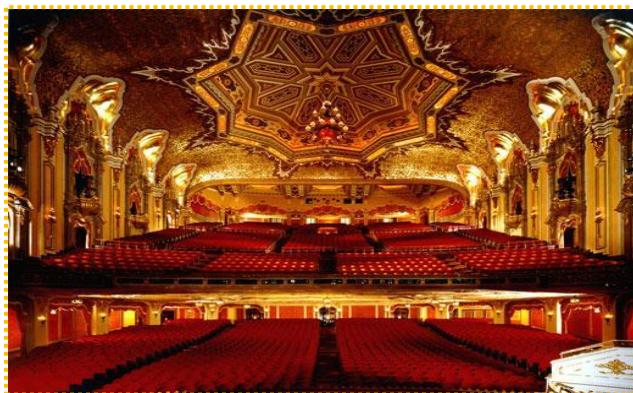


Flow-Liner®

“The Show Must Go On!”

History

The Palace Theatre was designed by Thomas Lamb with France’s Palais de Versailles in mind. In 1926, the theatre opened with nearly 3000 seats available. Great attention was paid to the hall’s acoustics as it was meant for performers to be heard without amplification.

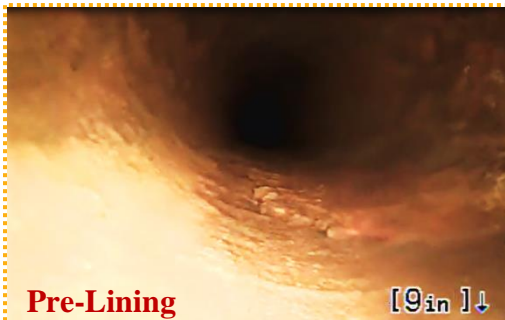


Issue

With the shows and their customers in mind, the theater was concerned with their aging drain pipes. A Flow-Liner® Installer was contacted for preventative maintenance.

Solution

A certified Flow-Liner® Installer lined the theatre’s pipe with Flow-Liner’s® Cured in Place Pipe Lining System with no disruption to the Palace’s historic interior.



Pre-Lining

[9in]↓



Post-Lining

[9in]↑

Flow-Liner® is proud to announce
Sauer Group/Palace Theatre
to our list of satisfied customers.