

“Innovation Meets Innovation”

Flow-Liner®

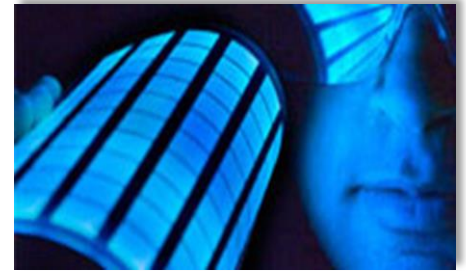
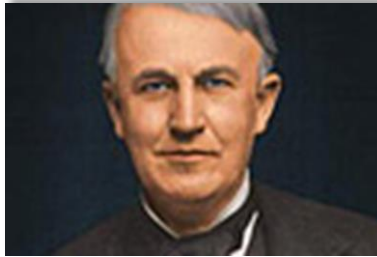
Non-Invasive Cured-In-Place-Pipe Lining Project For



The First Light Bulb



GE LIGHTING



OLED Sheet Light Technology

HISTORY: Thomas Alva Edison, GE Founder

Thomas Edison is heralded for his genius as an inventor. Less known is his brilliance as a business pioneer. By aligning multiple businesses to bring innovation to the marketplace, he laid the path for today's GE. 1876 was also the year that Thomas Alva Edison opened a laboratory in Menlo Park, New Jersey, where he could explore the possibilities of the dynamo and other electrical devices that he had seen in the Exposition. Out of that laboratory was to come perhaps the greatest invention of the age - a successful incandescent electric lamp. By 1890, Edison established the Edison General Electric Company by bringing his various businesses together.

Today GE is carrying on Thomas Edison's mission by developing new lighting technologies that will make our world brighter and more efficient.

Problem: Customer has two manufacturing plants in Ohio with underground sanitary and storm sewer piping in need of rehabilitation. One location with approx. 320 ft. of 8 inch and the other location with approx. 80 ft. of 10 inch clay tile piping.

Issues: The customer did not want to excavate the outside areas of the facilities. They were concerned excavation would disturb the surrounding environment such as trees, landscaping and grassy areas.

Solution: The clay tile pipes will be lined with the innovative Flow-Liner® Cured-In-Place-Pipe Lining System with organic polymer resin technology. A trained and certified Flow-Liner® Installer will perform the non-invasive work.

Result: The underground pipes were lined without excavation and disruption to the surrounding environment. The customer along with the trees, birds and other critters were very happy with the result.

Before Picture of Clay Tile Pipe (and critter)



After Picture of Clay Tile Pipe Lined with Flow-Liner® (critter was removed and not harmed)



Flow-Liner® is pleased to announce another successful project and add



GE LIGHTING

To our Roster of Happy Satisfied Customers