

# Flow-Liner®

## “Dives In at the Waterpark” With a Pipe Lining Technology Answer



### History

Kalahari Resorts and Conventions have locations in Wisconsin Dells, Wisconsin and Sandusky, Ohio. The Sandusky Kalahari Resort location, built in 2000, prides itself as America’s largest indoor waterpark. The facility also consists of a large outdoor waterpark, a lazy river with uphill water roller coasters and the region’s only dual indoor FlowRider® for bodyboarding. Kalahari Resort is open 24 hours a day, 7 days a week, 365 days a year and has something for everyone to enjoy whether you prefer to be wet or dry.



Access to 12” ID Pipe in drain sump



Flow-Liner® Equipment Set-up

### Problem/Issue

The Resort contacted the Flow-Liner Certified Installer after finding that there was a leak in a 12” ID pipe in the outdoor Lagoon Pool. The 12” line ran from the drain sump in the Lagoon Pool to the Pump Room approximately 170 ft. under the concrete deck of the outdoor pool area.

### Solution

Using Flow-Liner® technology, a Flow-Liner Certified Installer located the leak and used the Flow-Liner Pipe Lining System to line the leaking pipe.

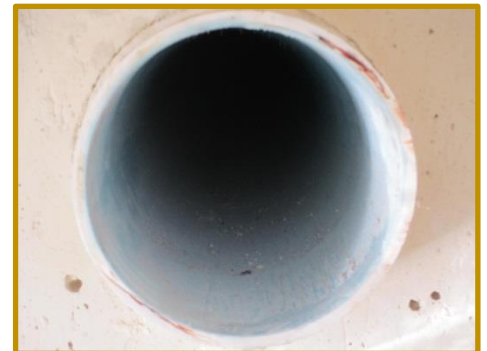
### Results

The pool drain pipe was successfully lined without excavation to the pool or pump room. The Corporate Director of Water Park Maintenance commented:

*“We are very happy with the Flow-Liner installer and pleased that we didn’t have to dig up and replace the leaking pipe.”*



Access to 12” ID Pipe in the Pump Room



12” ID pipe after Flow-Liner® installed

We are pleased to announce another successful project and proudly add

## Kalahari Resorts & Conventions

to our list of happy and satisfied customers.