

Flow-Liner®

“Keeps the Power Flowing”

With a Pipe Lining Technology Answer



History

FirstEnergy was formed in 1997 through the merger of Ohio Edison Company and Centerior Energy Corporation. In 2001, it merged with GPU, Inc., based in Morristown, NJ. In 2011, FirstEnergy completed a merger with Allegheny energy, based in Greensburg, PA. Today, FirstEnergy is one of the nation’s largest investor-owned electric systems based on the number of customers served – six million! They have operations in six states with 65,000 square miles of service territory and 20,000 miles of high-voltage transmission lines.

Problem

FirstEnergy had two underground pipe sections in need of repair located at their Pennsylvania power plant station.

Issue

The pipes were 10 inch fiberglass, approximately 375 feet each in length. One line had one 90 degree bend and the other line had two 90 degree bends. The lines were located six feet underground beneath the power station operation area. *Excavation was not an option!*



Pipe Cleaning Equipment Set-up

Solution

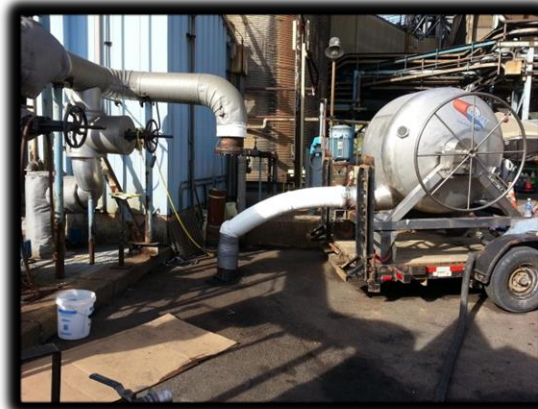
A certified Flow-Liner Installer, using Flow-Liner® technology, prepared and installed the Industrial Pipe Flow-Liner® system in the 10 inch fiberglass pipes.

Results

The pipe lines were successfully lined without interruption or excavation required. The Supervisor of Plant Production made the following comment, “*we are glad we did not have to dig the pipes up due to power cables running under ground and the pipes only being 12 inches apart*”.



10 inch fiberglass pipe
prior to lining



Flow-Liner® Equipment Set-up



10 inch fiberglass pipe after
Flow-Liner® installed

We are pleased to announce another successful project and proudly add

FirstEnergy®

to our list of happy and satisfied customers.